



Cisco ISE (Identity Services Engine) Settings

[Mail: Contact@kloudspot.com](mailto:Contact@kloudspot.com)

www.kloudspot.com

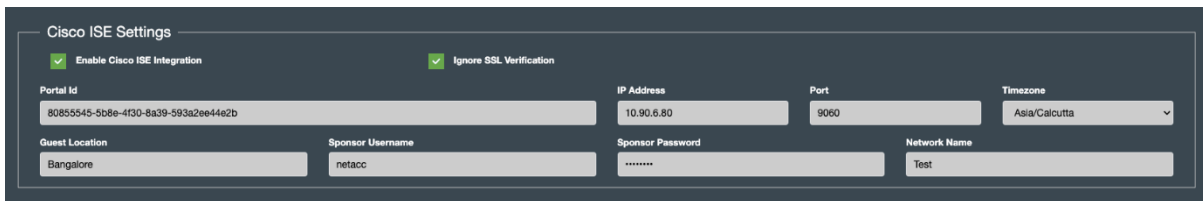
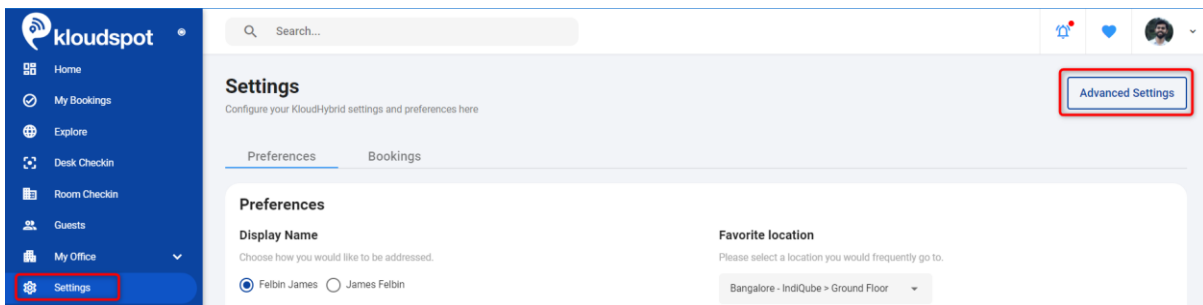
Follow us on



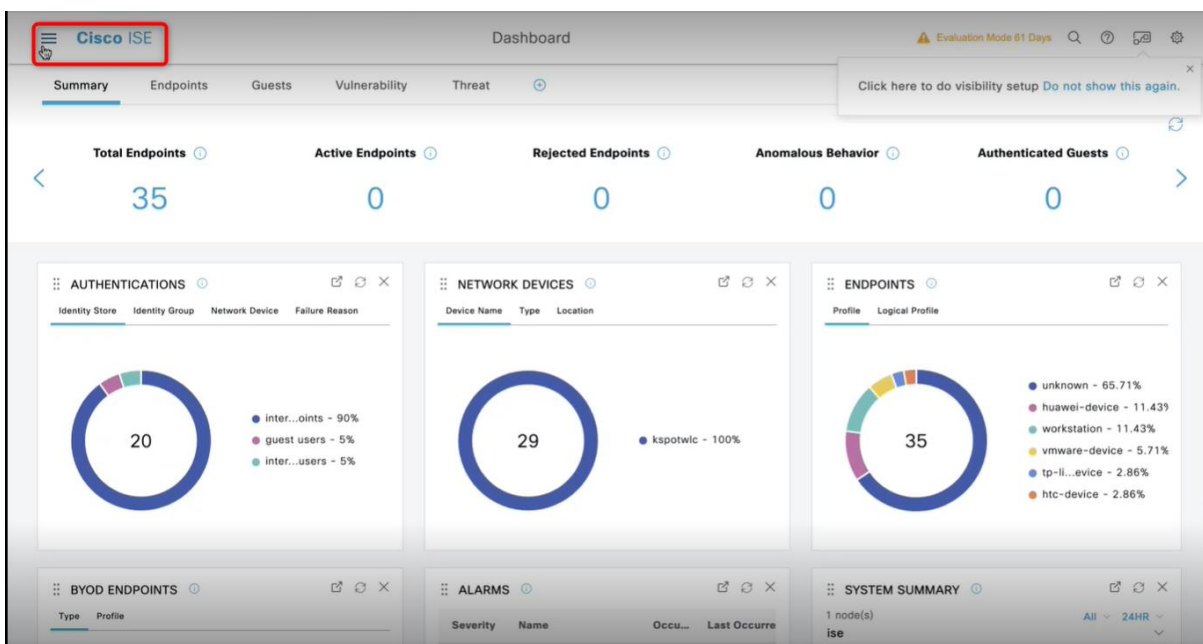


Cisco ISE (Identity Services Engine) Settings

1. Cisco ISE (Identity Services Engine) is used to identify and authenticate guest Wi-Fi users.
2. To integrate Cisco ISE into **Kloudspot Hybrid Work**. Navigate to **Advanced settings** and then go to **Configuration > Hybrid settings > Application Integrations**. Then scroll down and find the **Cisco ISE Settings**.
3. Enable it and enter the required values in the text boxes. Uncheck the **Ignore SSL Verification** checkbox if you have a valid SSL certificate. Check this box if you are using a self-signed certificate.

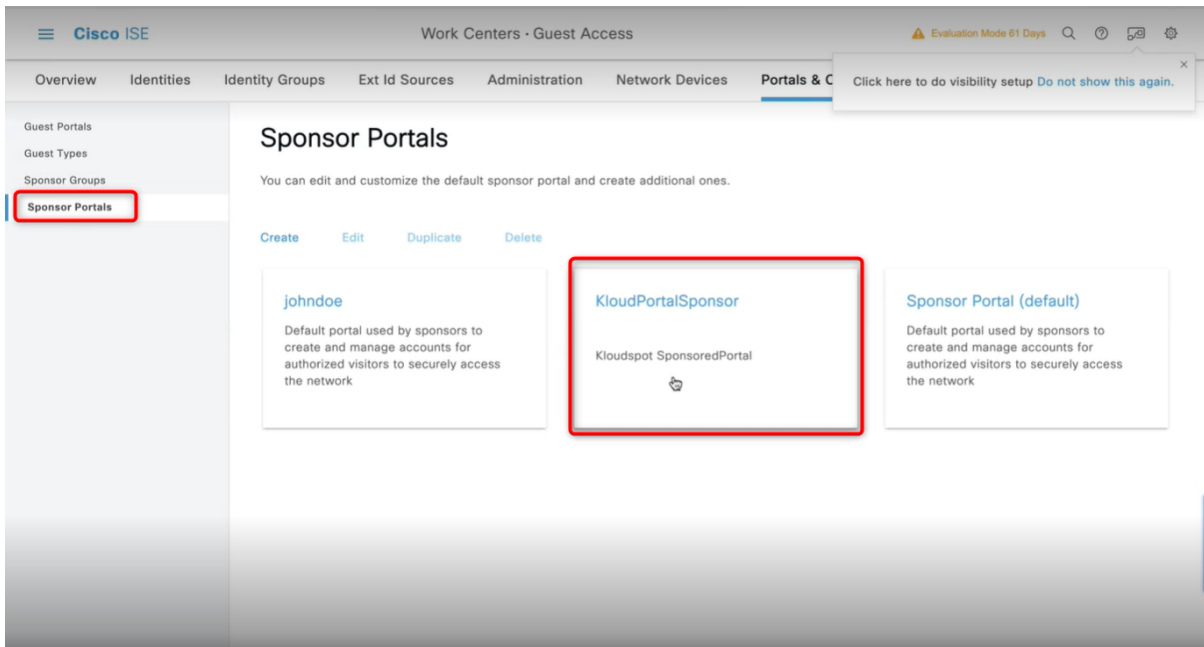


4. To receive other credentials, log in to the Cisco ISE portal with your ISE credentials.

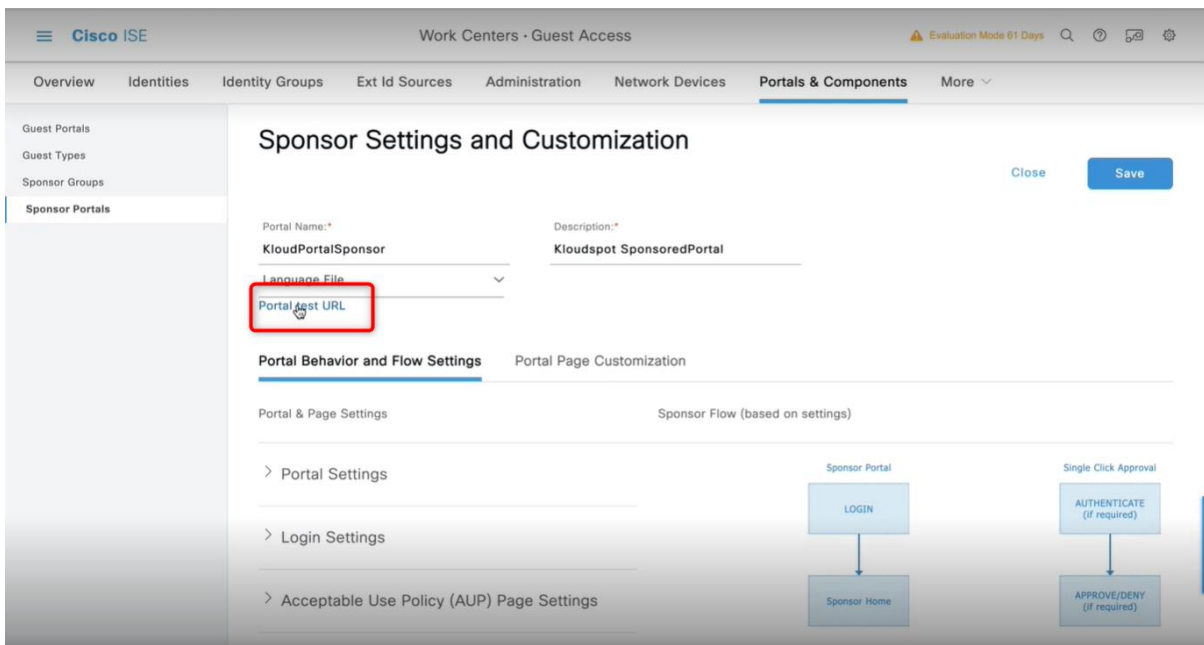


5. Navigate to **Sponsor Portal > Select your portal**

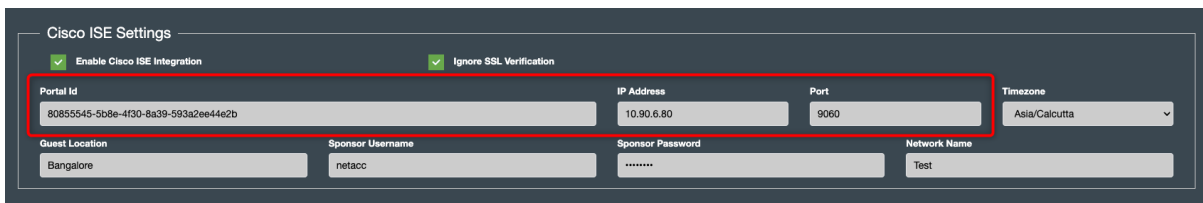
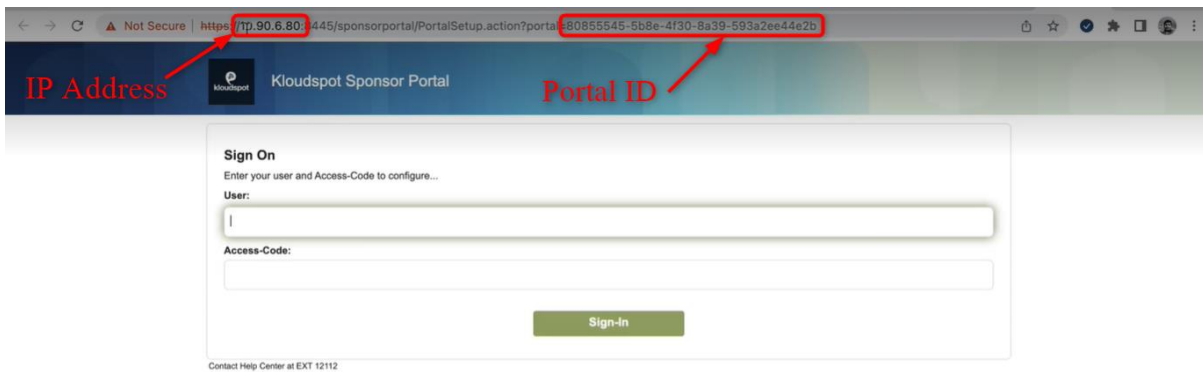
Note: In this case, we are going to use KloudPortal. You can access your organization's sponsor portal from here.



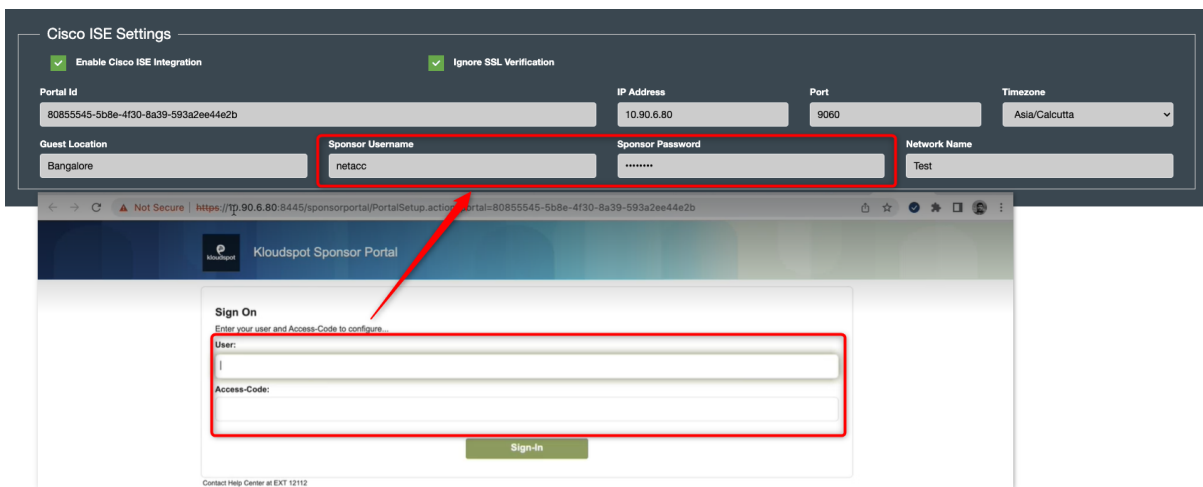
6. Then go to the **Portal test URL**.



7. This will take you to the sponsor portal's login page.
8. The **Portal ID and IP Address** can be obtained from the address bar.
9. The **Port** value will be 9060. You can directly enter it in the text box.



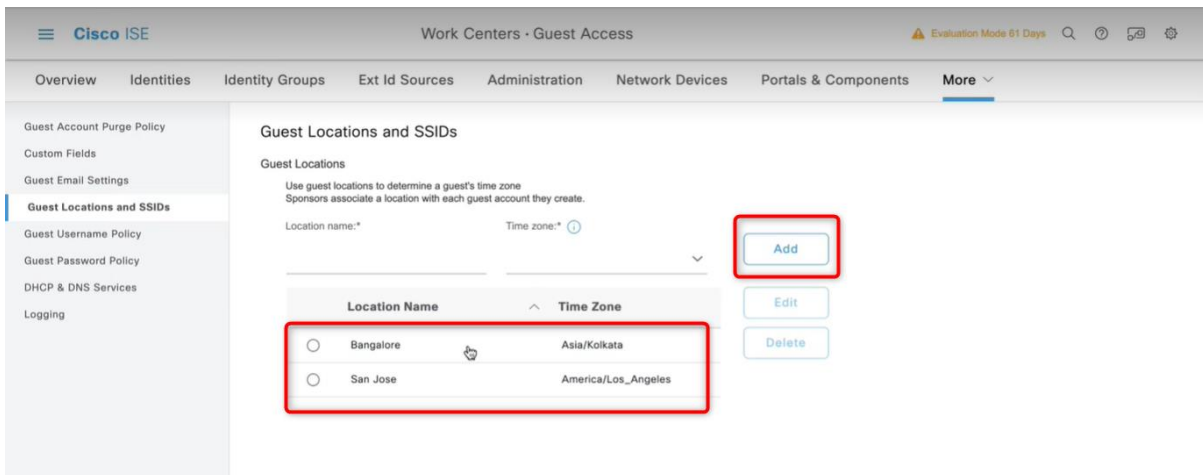
10. The Sponsor Username and Sponsor Password are the User and Access code of the sponsor portal. It can be entered here.



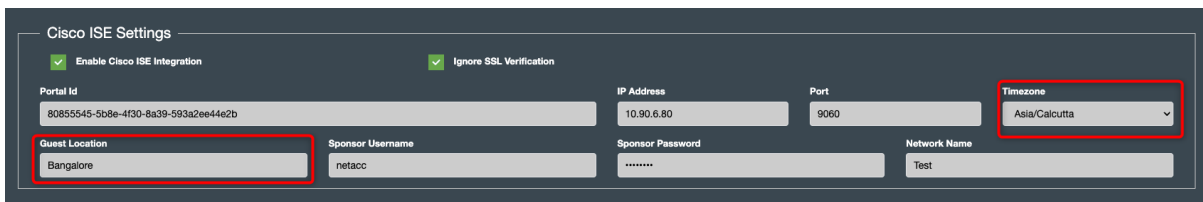
11. **Guest location** is the network location configured in the Cisco ISE portal.
Note: Only one network location should be added if an organization has more than one.

12. To configure Network location in Cisco ISE.

- a. Navigate to **Work Centers > Guest access > settings > Guest locations and SSIDs**.
- b. Click **Add** button to add Location and Timezone.



13. Select the same **Location and Timezone** from the advanced settings.



14. Cisco ISE is integrated successfully.